

## INTRODUCTION

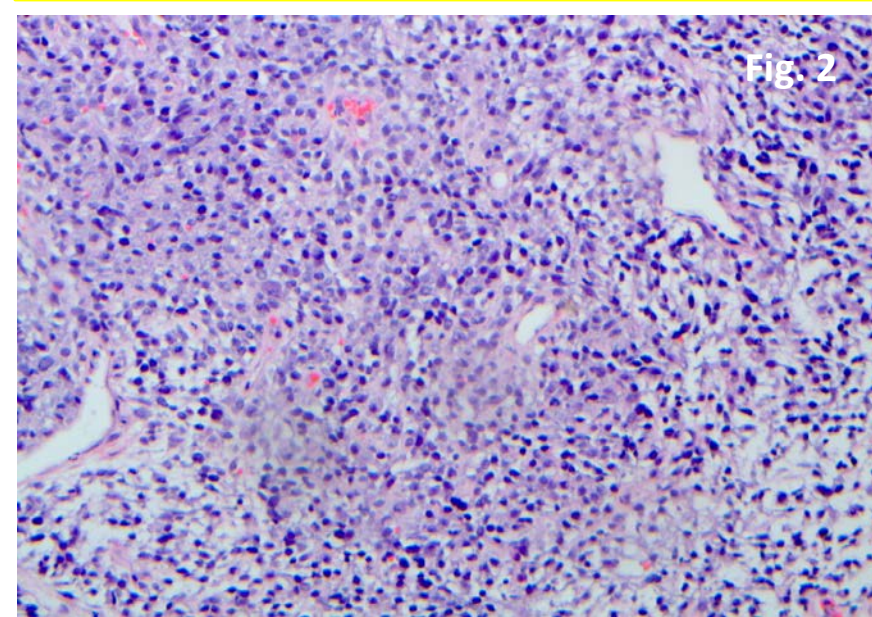
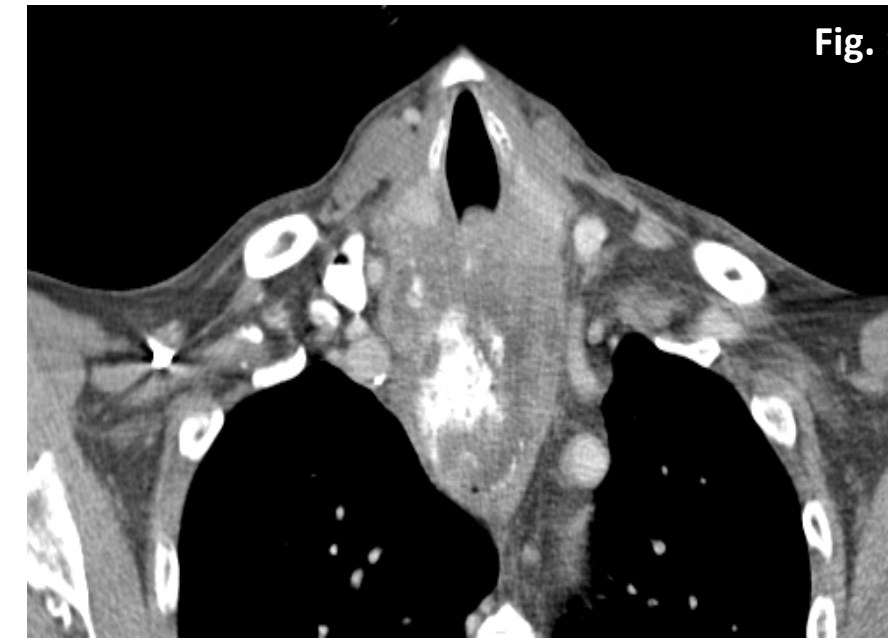
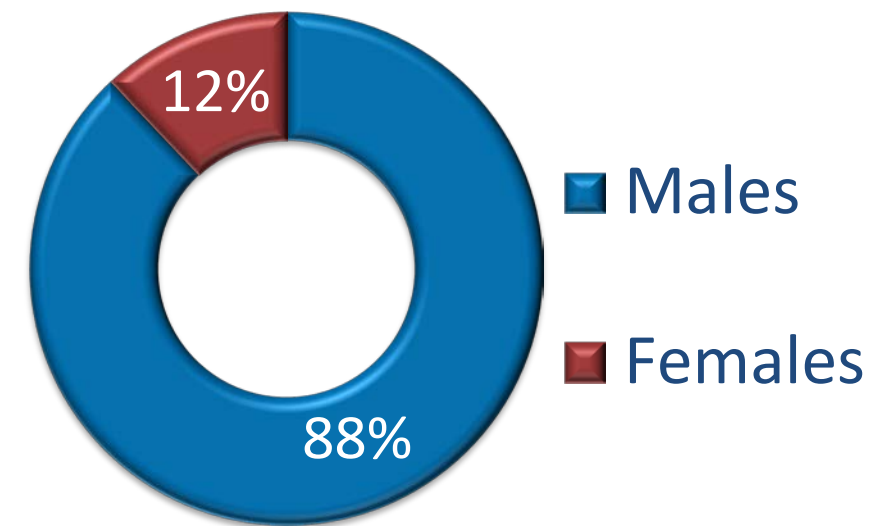
- Esophageal sarcoma is a rare tumor most commonly presenting in the thoracic esophagus of adult males
- The literature contains case reports and small case series describing pathology and imaging features
- Our team compiled the largest known systematic review of the literature regarding esophageal sarcoma: 89 cases in 56 publications

## METHODS

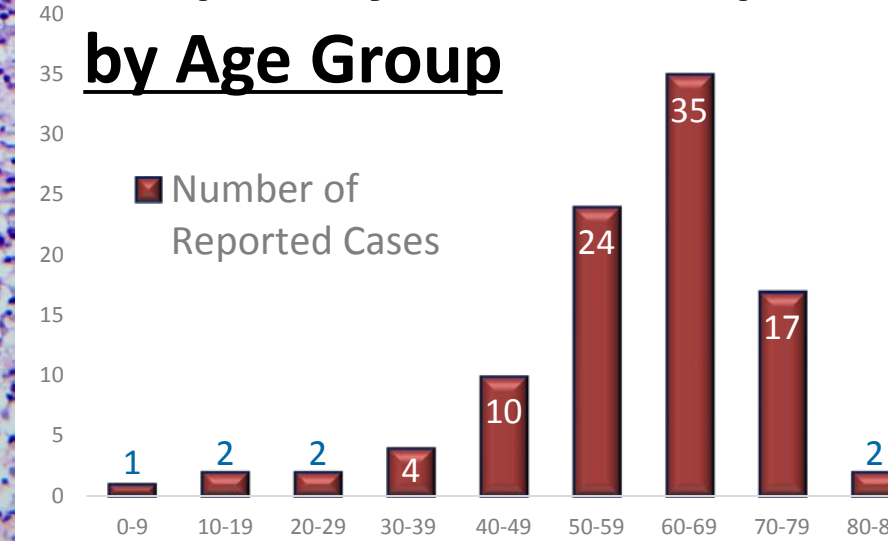
- PubMed search conducted via Medline, SCOPUS, and Ovid engines for “esophageal sarcoma,” and “radiology,” or “imaging,” or “pathology,” or “immunohistochemistry”
- Results were sorted for case reports without any language or date limits.
- References of all relevant publications were evaluated for possible missed citations
- Inclusion criteria include tumor confirmation by pathology, inclusion of patient age at diagnosis, sex, and tumor location

## RESULTS

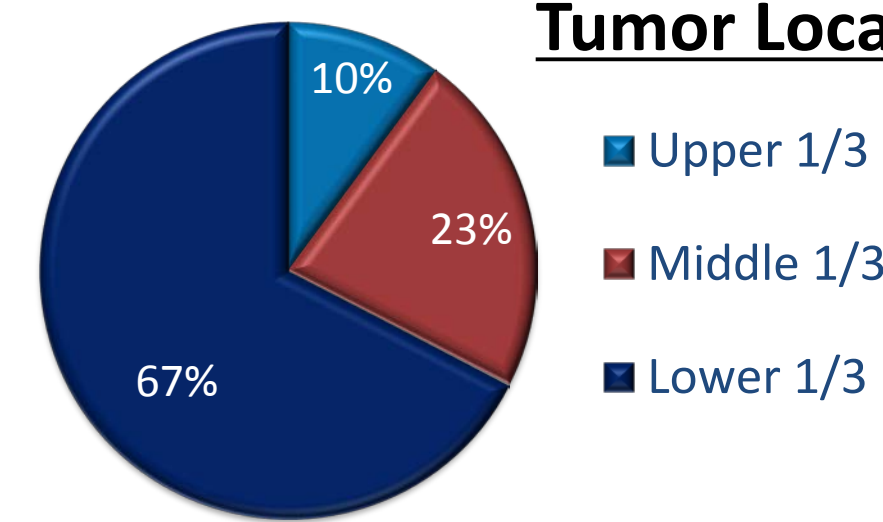
### Sarcoma Sex Distribution



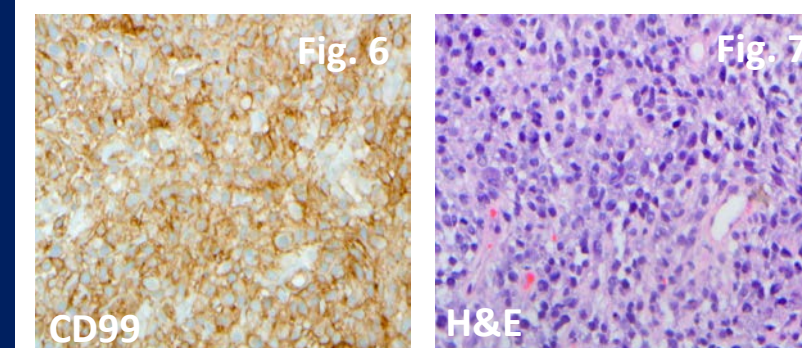
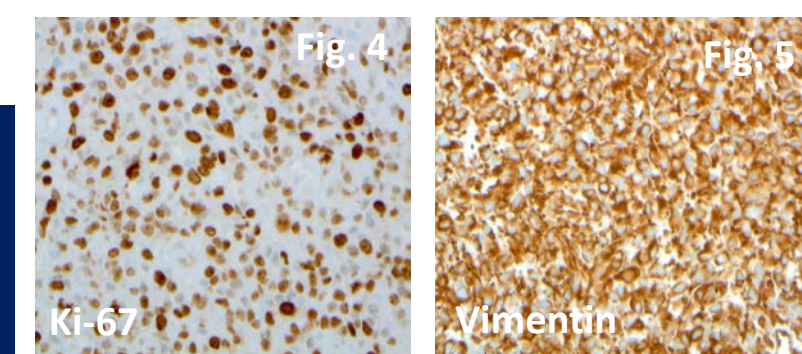
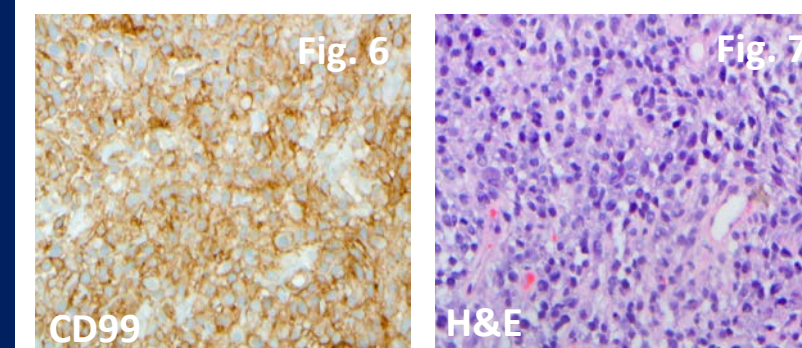
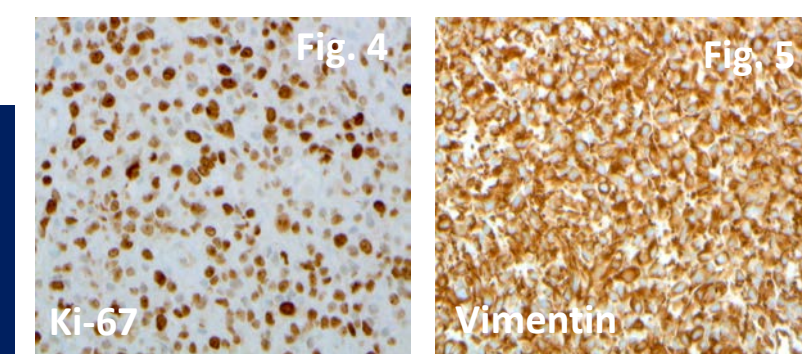
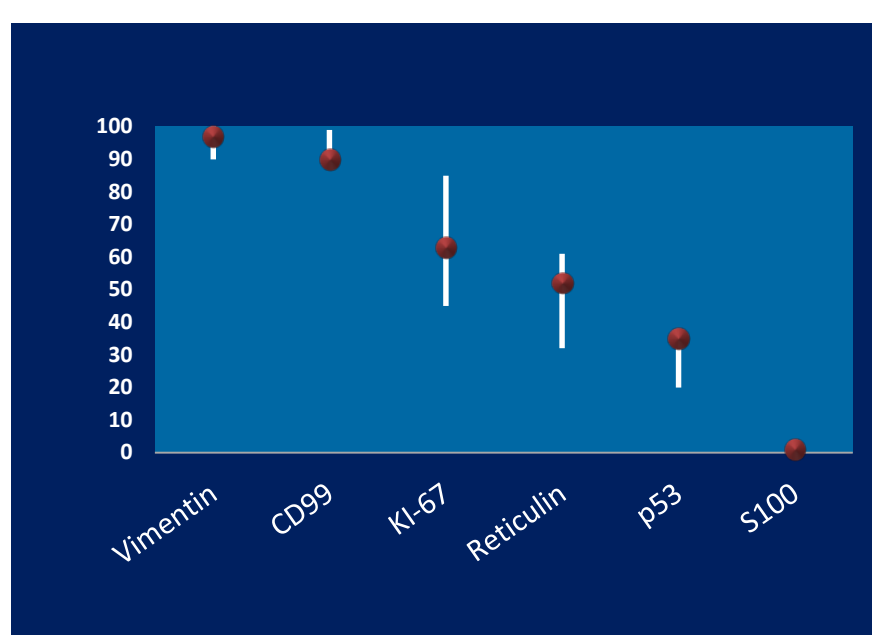
### Frequency of Case Reports by Age Group



### Tumor Location



### Pathology Stain % Positivity



## SUMMARY

- Esophageal sarcomas are often rapidly growing neoplasms of the lower esophagus
- Distinguishing histologic features include a biphasic carcinomatous and spindle cell appearance with prominent mitotic activity
- Positive stains include Vimentin, CD99, Reticulin, p53, and Cytokeratin for epithelial components
- Esophageal sarcomas are negative on S100 staining

## CONCLUSION

- Consider esophageal sarcoma in middle-aged to elderly males who present with rapidly growing neoplasms of the lower esophagus.

## CREDITS/DISCLOSURE/REFERENCES

- Stout AP, Latters RL. Tumors of the esophagus. In: Atlas of Tumor Pathology, sect V, fasc 20. Washington: Armed Forces Institute of Pathology; 1957. p. 1-95.
- Golioto M, McGrath K. “Primary lymphoma of the esophagus in a chronically immunosuppressed patient with hepatitis C infection: case report and review of the literature,”
- S. Patricia, Das Saikat, B. Rajesh, et al. “Rare Cause of Stricture Esophagus—Sarcoma: A Case Report and Review of the literature,” Case Reports in Gastrointestinal Medicine, vol. 2011.
- Lokesh V, Naveen T, Pawar YS. “Spindle cell sarcoma of esophagus: A rare case presentation.” J Can Res Ther 2010;6:100-101
- H. Kimura, K. Konishi, T. Kawamura et al., “Esophageal sarcomas: report of three cases,” *Digestive Surgery*, vol. 16, no. 3, pp. 244–247, 1999.

Complete  
references  
available via  
QR Code

