

Population Analysis of Patients Served by Sojourner Free Health Clinic: Demographics



Chanakyaram Reddy¹, Ashwini Poola¹, Sheeba Kunnel¹, Fatima Shekhani¹, Himanshu Banda¹, Angela Barnett, MD^{1,2}

¹University of Missouri-Kansas City, ²Truman Medical Center



BACKGROUND

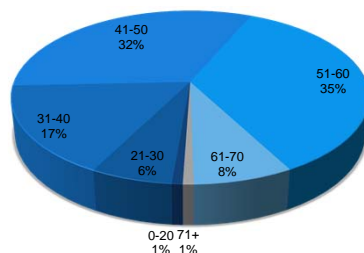
- The Sojourner Free Health Clinic (SFHC) is a service-based, student-operated clinic located in downtown Kansas City, Missouri at the Grand Avenue United Methodist Temple.
- It was founded and is currently run by medical students and physicians from the University of Missouri – Kansas City (UMKC) School of Medicine.
- It is considered a partner clinic of Truman Medical Center, a tertiary care facility. The SFHC operates every Sunday afternoon, and provides free outpatient medical services to the homeless and underserved population of Greater Kansas City.
- Since opening its doors in October 2004, SFHC has played an integral role in providing primary care to patient population, providing comprehensive physical exams, medications and laboratory services free of charge.
- To date, there have been no studies defining the SFHC population. Obtaining this information would be helpful to create a more patient-centered approach in the clinic's healthcare delivery.
- The purpose of this study is to gather basic demographic information of the SFHC patient population.

METHODS

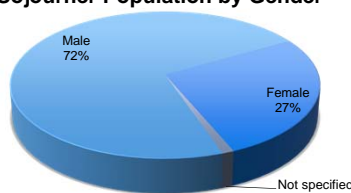
- This study is a retrospective review of clinical charts available in the SFHC from January 1, 2010 to August 31, 2011.
- We reviewed 367 charts from this period.
- We addressed age, gender, ethnicity, address, smoking/alcohol use, number of visits during studied time period, and number of total visits dating back to initial clinic encounter.

RESULTS

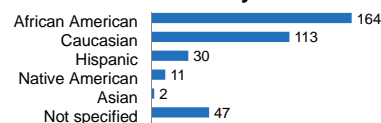
Sojourner Population by Age



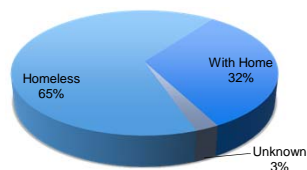
Sojourner Population by Gender



Sojourner Population by Ethnicity

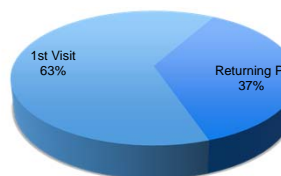


Living Situation

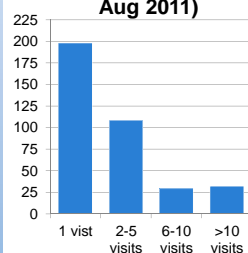


RESULTS

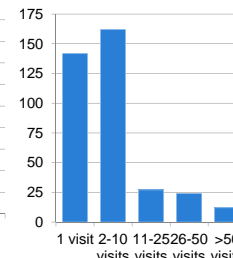
Visit Statistics of Patients within Study Period



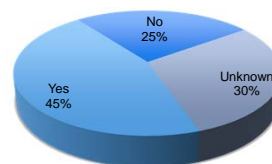
Visits during Study Period (Jan 2010-Aug 2011)



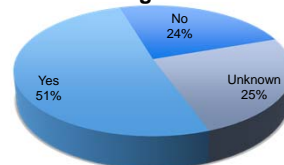
Total Visits per Patient



Alcohol Use



Smoking Status



CONCLUSIONS

- 67% of patients are between the ages of 41-60 with an overall average age of 48+/- 11.
- Over 70% of the population is male.
- 76% of the population is either African American or Caucasian. With African Americans representing the majority at 45%.
- 65% of patients are homeless.
- 63% of patients had their first visit within the studied time period with over 50% of patients not returning for a second visit.
- 51% of patients admitted to tobacco use with the status of 24% of patients unknown.
- Based on this data, SFHC serves primarily homeless middle-aged patients. Males and African Americans account for a high number of patients.
- SFHC was designed to be a primary care clinic with emphasis on providing preventative measures. However, based on the data, the clinic seems to function as urgent care clinic as most patients do not return for follow-up.
- Another important finding is the high prevalence of tobacco use. The data supports the need for increased emphasis on smoking cessation counseling at the first and subsequent visits.
- In addition to providing us with a demographic description of our patients, this data proves the need for SHFC to evaluate the type of services offered to the patient population served.